



## Spazi in legno per il nuovo Headquarter di Iperceramica

**Ing. Pierpaolo Casini**

*Responsabile progettazione e calcolo edifici in legno di Sistem Costruzioni*

27/05/2021

## Iperceramica Headquarter

Committente: Iperceramica  
Progetto : Mario Cucinella Architects  
Progetto Strutturale: Maffeis Engineering  
Superficie utile: 1700 mq  
Tipologia: Telaio pesante – post and beam  
Tempo di realizzazione struttura: 3 mesi  
Anno di realizzazione: 2019



©MARIO CUCINELLA ARCHITECTS

# Iperceramica Headquarter



©MARIO CUCINELLA ARCHITECTS

# Iperceramica Headquarter - PIANTE



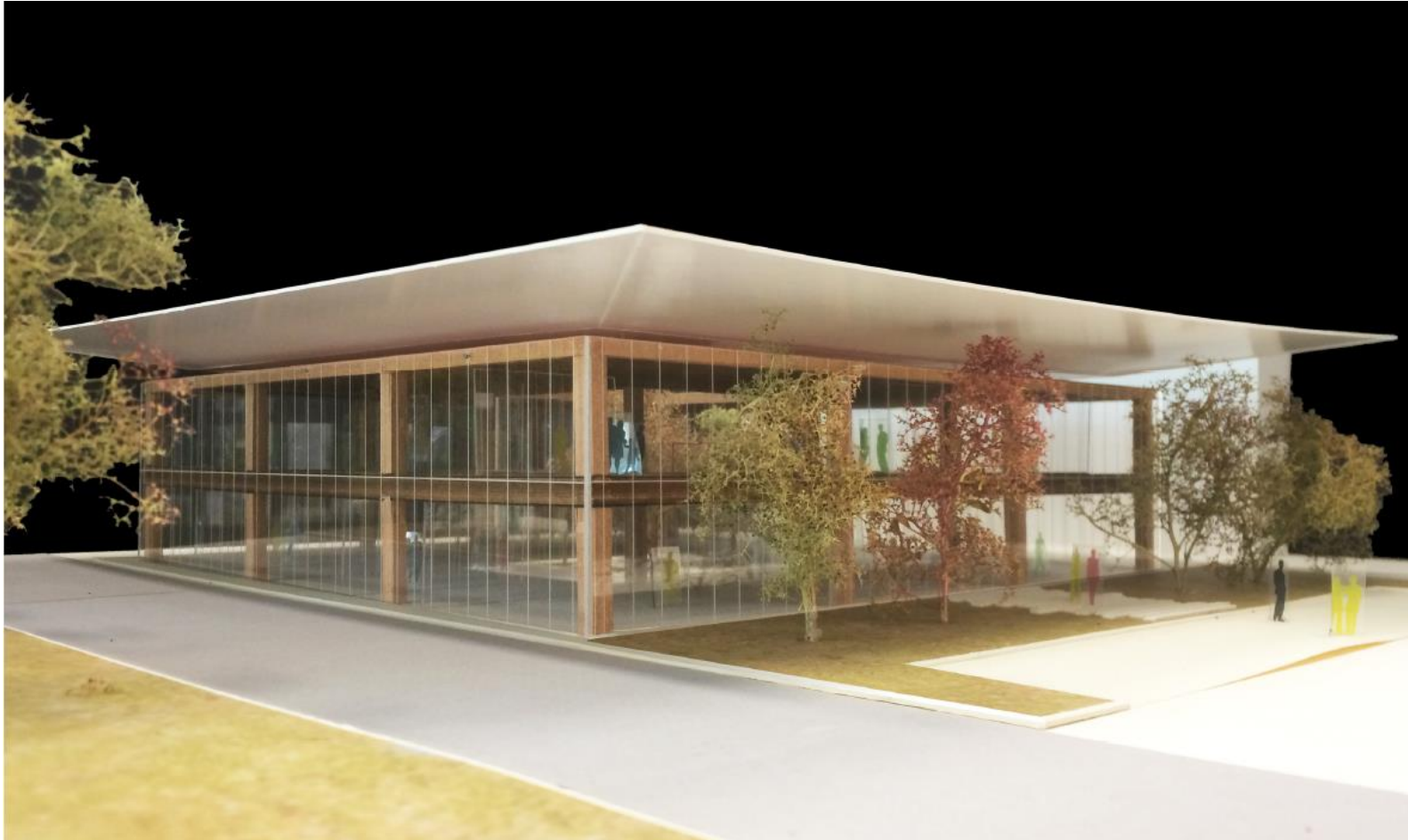
©MARIO CUCINELLA ARCHITECTS

# Iperceramica Headquarter - PIANTE



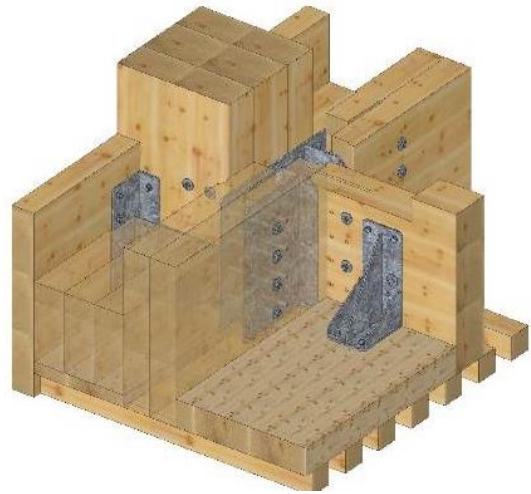
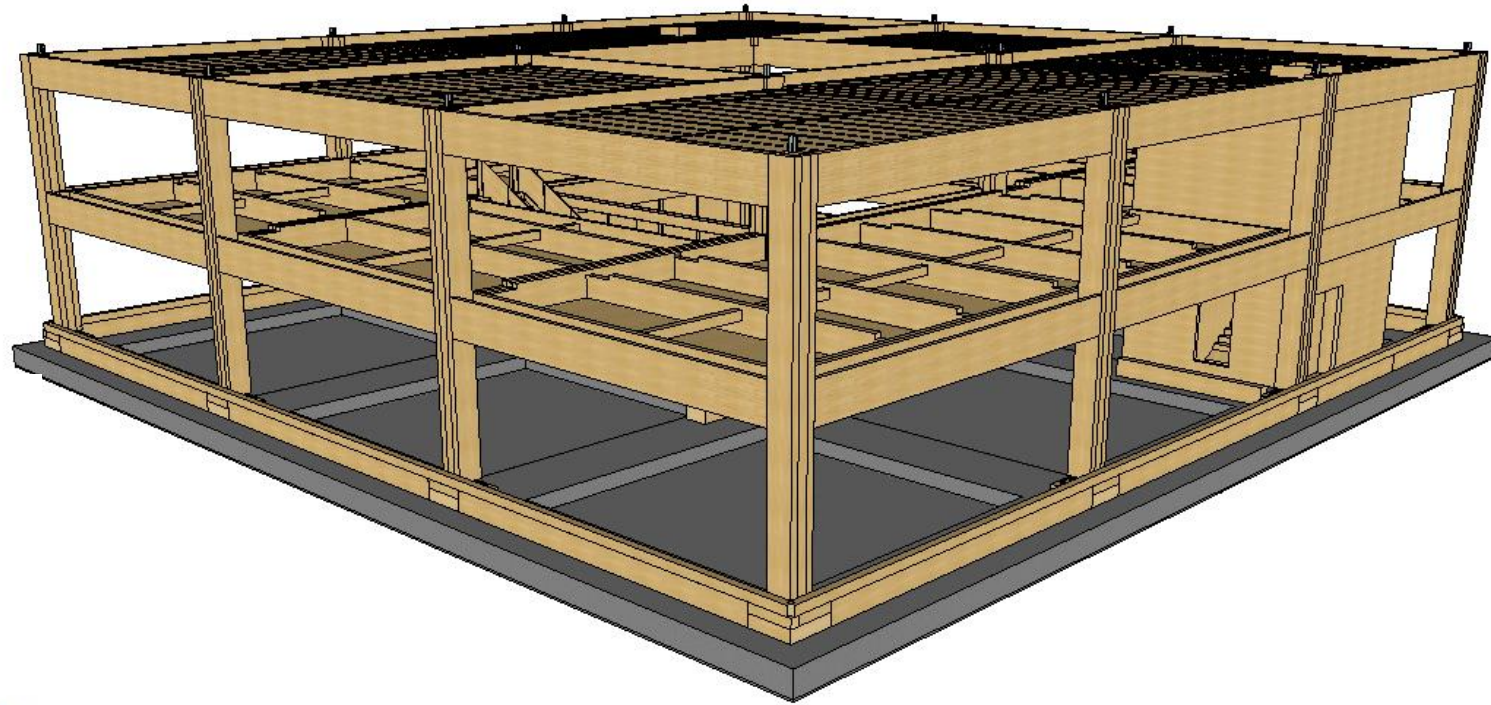
©MARIO CUCINELLA ARCHITECTS

# Iperceramica Headquarter – SISTEMA COSTRUTTIVO

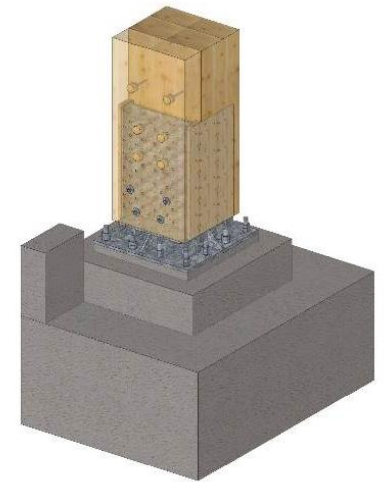


©MARIO CUCINELLA ARCHITECTS

# Iperceramica Headquarter – SISTEMA COSTRUTTIVO



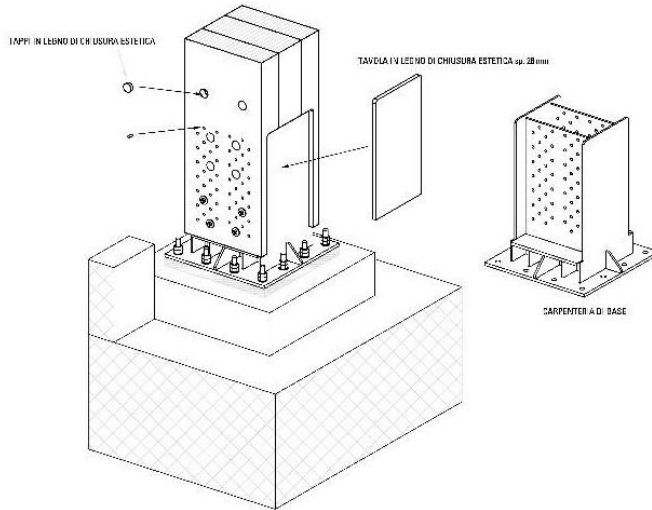
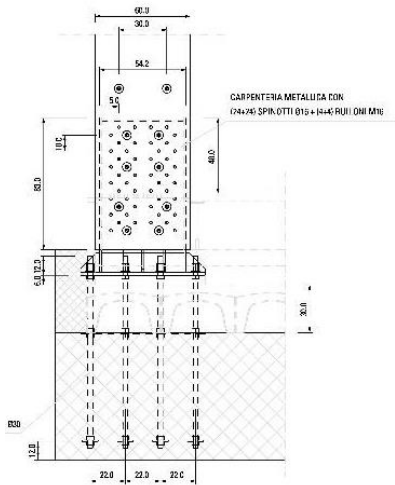
Struttura travi e pilastri con semi- incastri nei nodi



# Iperceramica Headquarter – PILASTRI

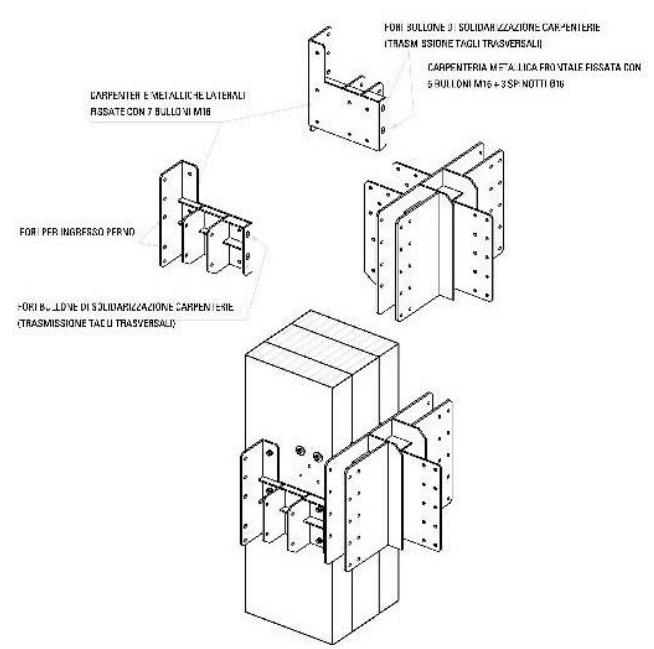
Portapilastri h=1 m  
 Peso 400Kg  
 48 spinotti M16  
 8 bulloni M16  
 10 tirafondi M30

M= 22737 daNm (SLV)  
 N=92868 daNm (SLU)

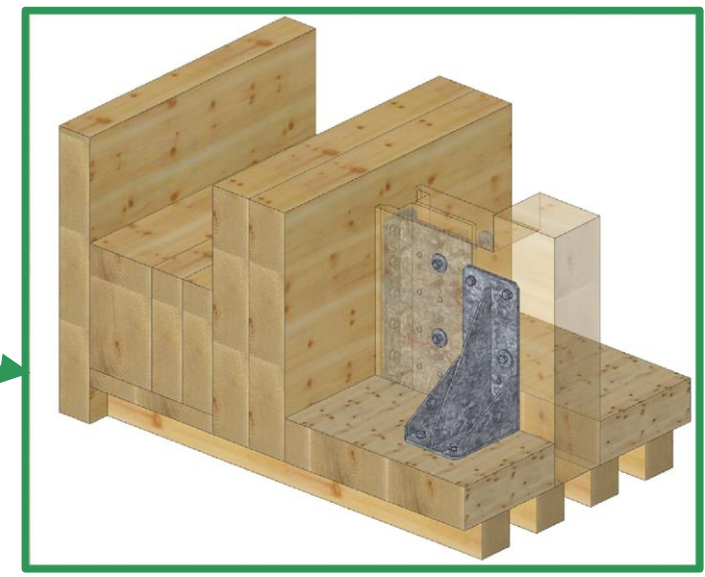
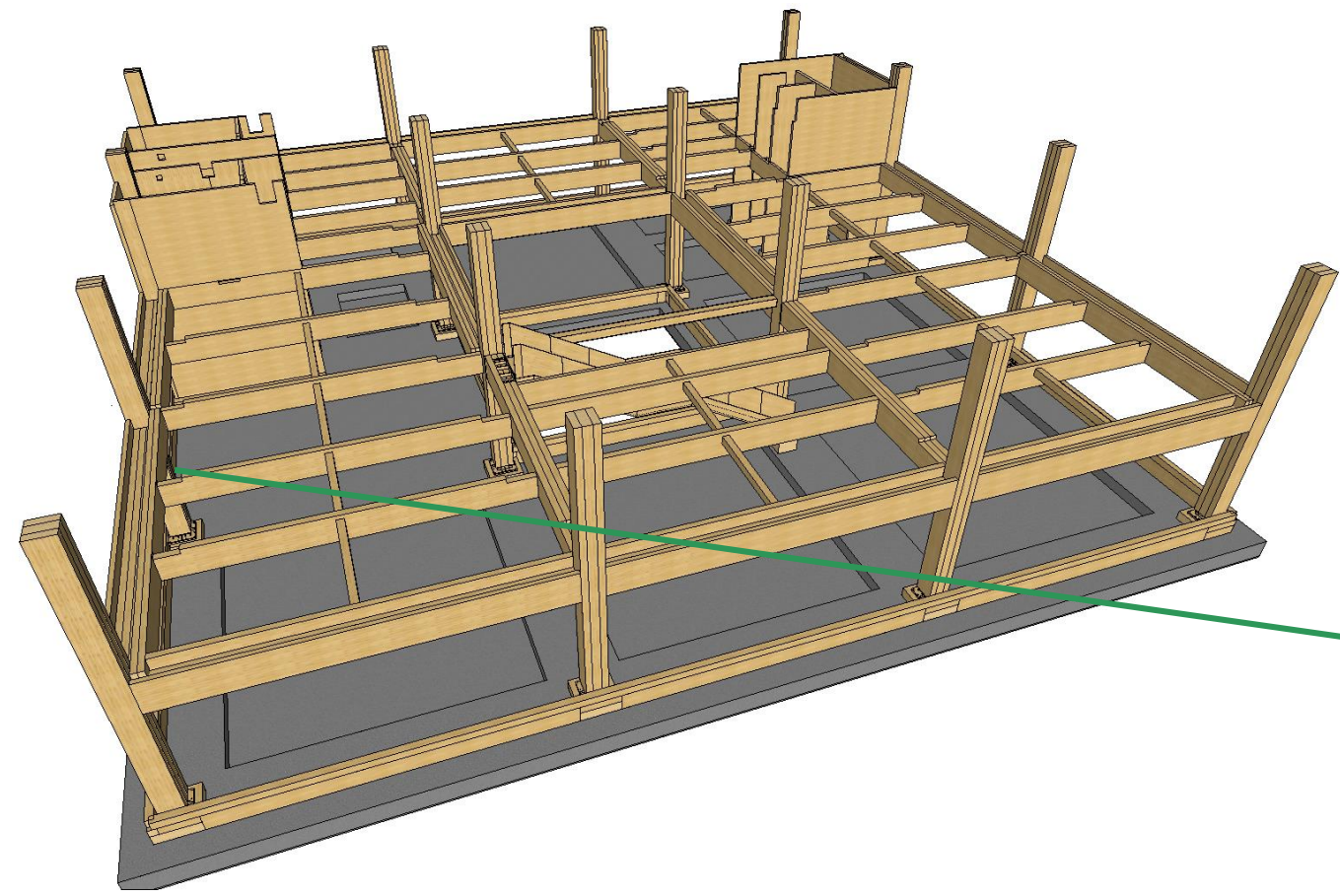




# Iperceramica Headquarter – NODO TRAVE/PILASTRO

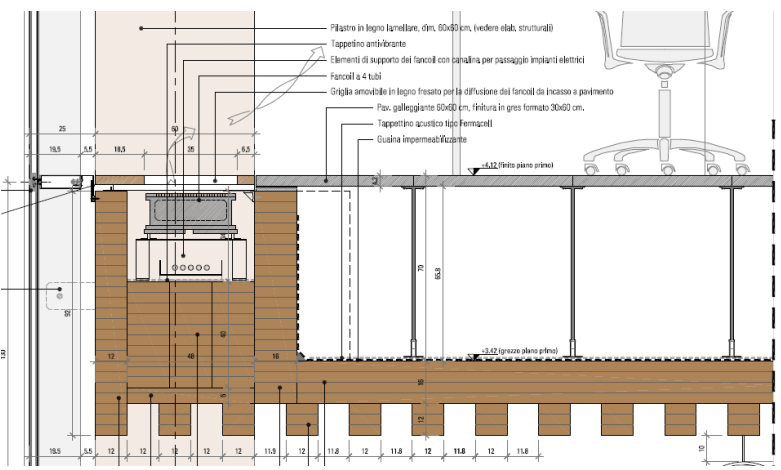
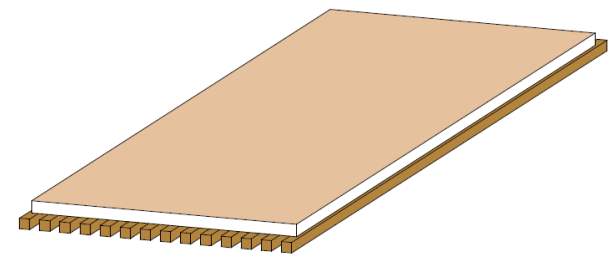
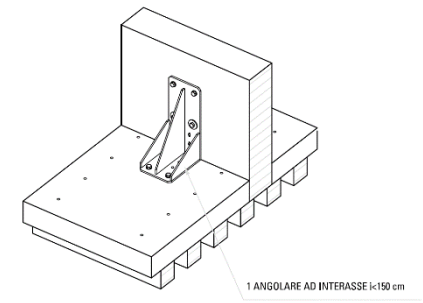
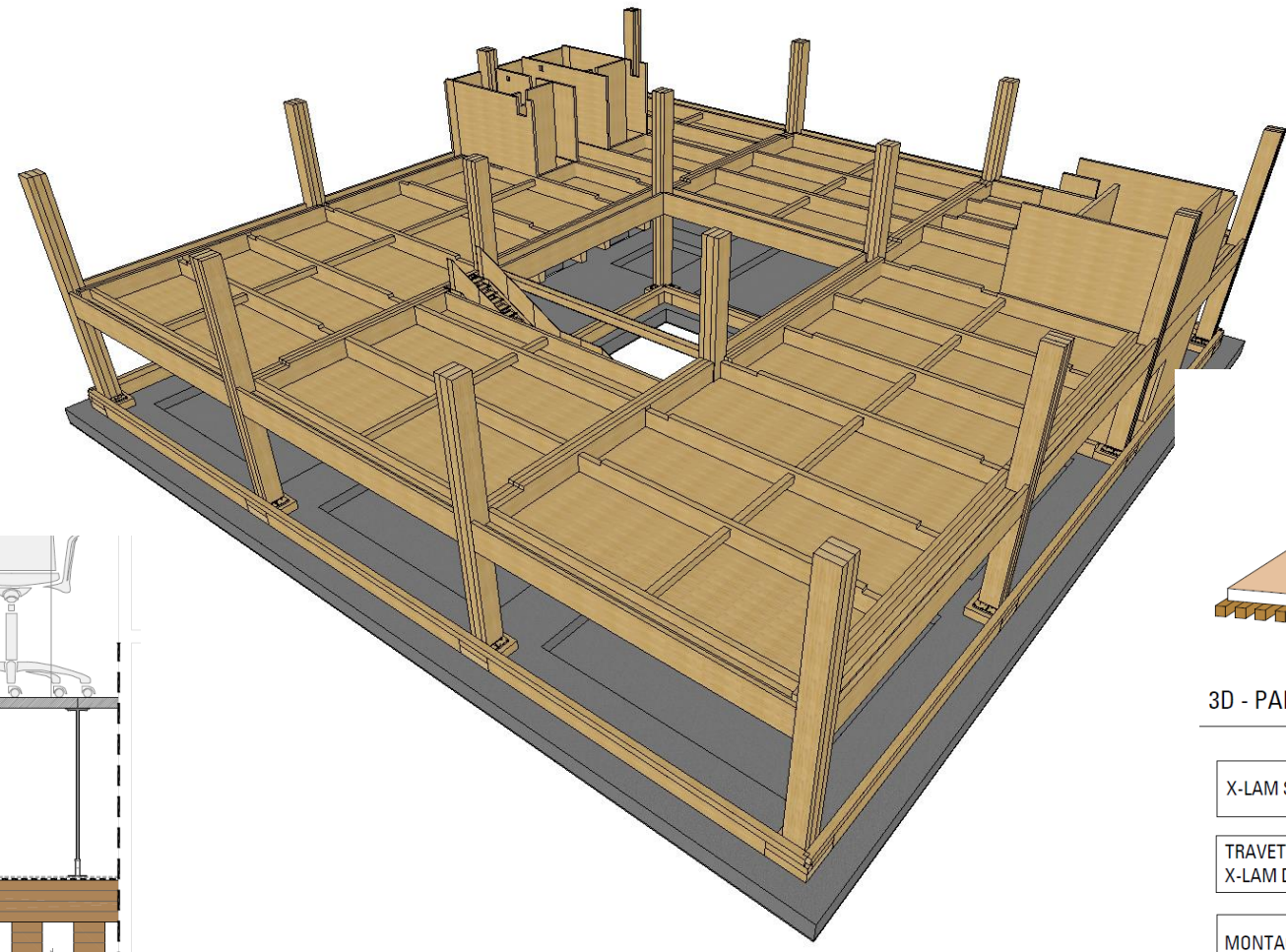


# Iperceramica Headquarter – TRAVI (1° orizzontamento)



# Iperceramica Headquarter – PANNELLI PREASSEMBLATI

n.20 angolari a pannello



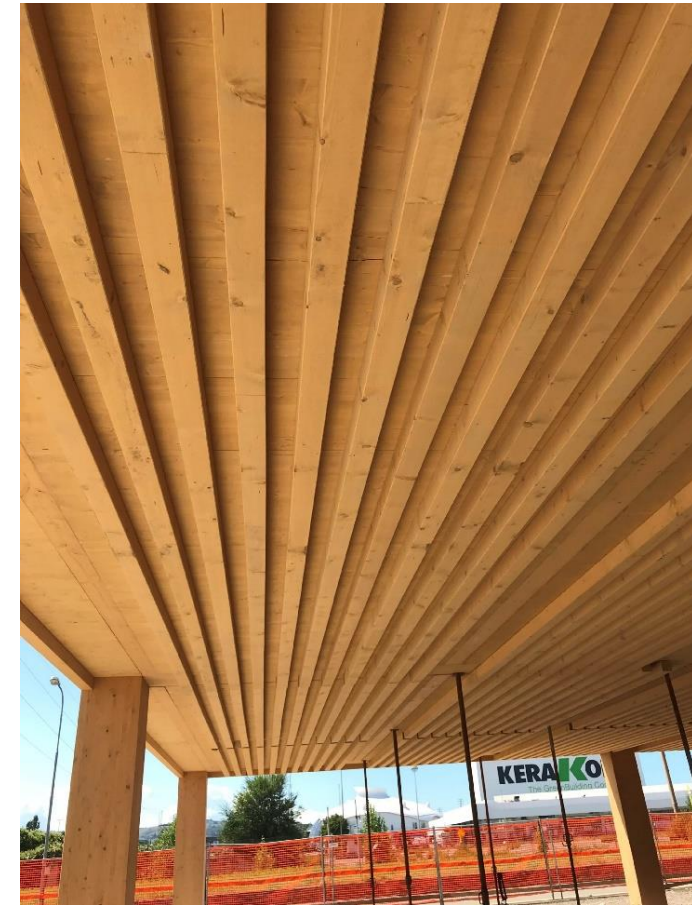
3D - PANNELLO PREASSEMBLATO TIPO - P1

X-LAM SPESSORE 14cm: 5 STRATI (4+2+2+2+4)

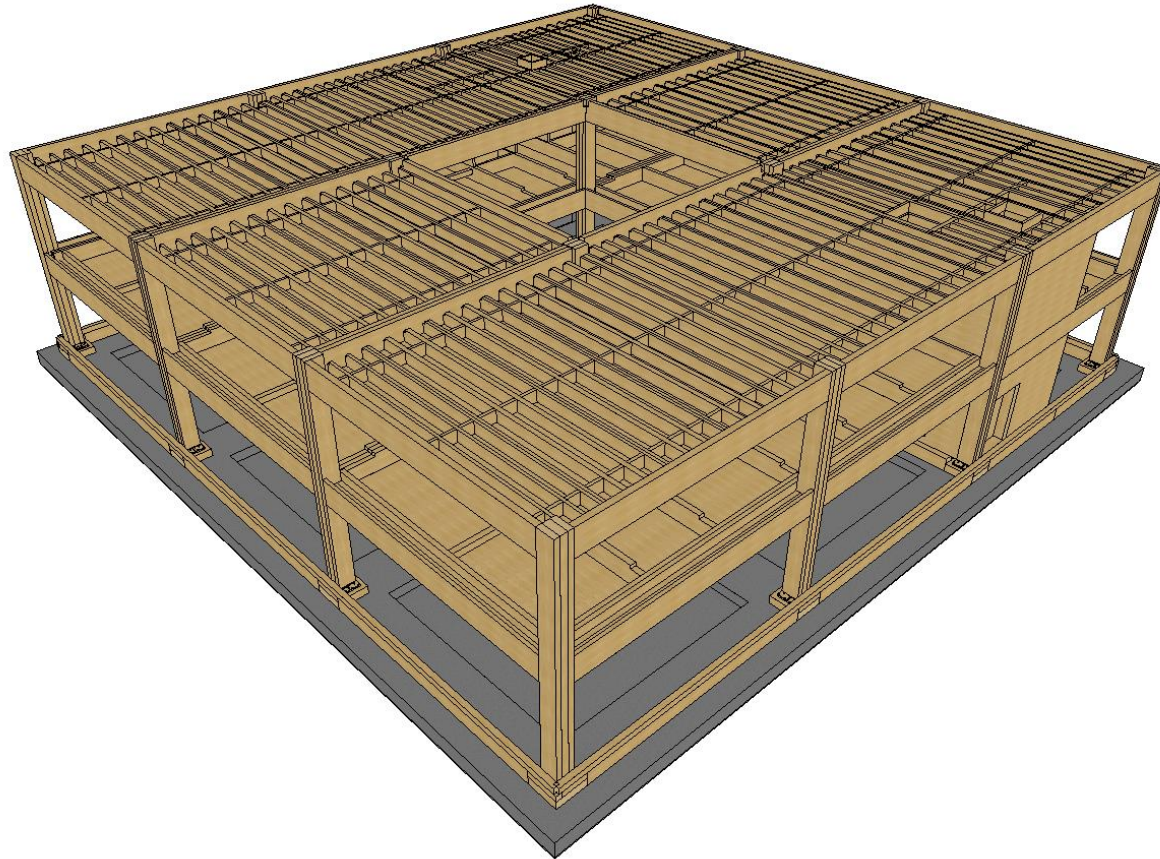
TRAVETTI 12x12/24cm AVVITATI AL PANNELLO X-LAM DI SOLAIO IN STABILIMENTO.

MONTAGGIO CON SOLLEVAMENTO DA SOTTO

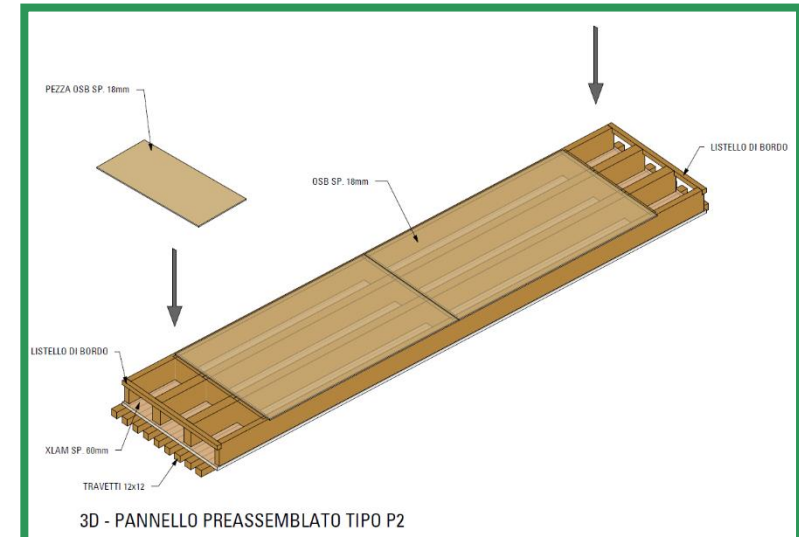
# Iperceramica Headquarter – FASI DI CANTIERE



# Iperceramica Headquarter – COPERTURA



Travi centrali 16x40  
Travi di bordo 10x40  
Pannello x-lam 6 cm  
OSB 18 mm  
Travetti 12x12 all'intradosso



# Iperceramica Headquarter – FASI DI CANTIERE



## Iperceramica Headquarter – FASI DI CANTIERE

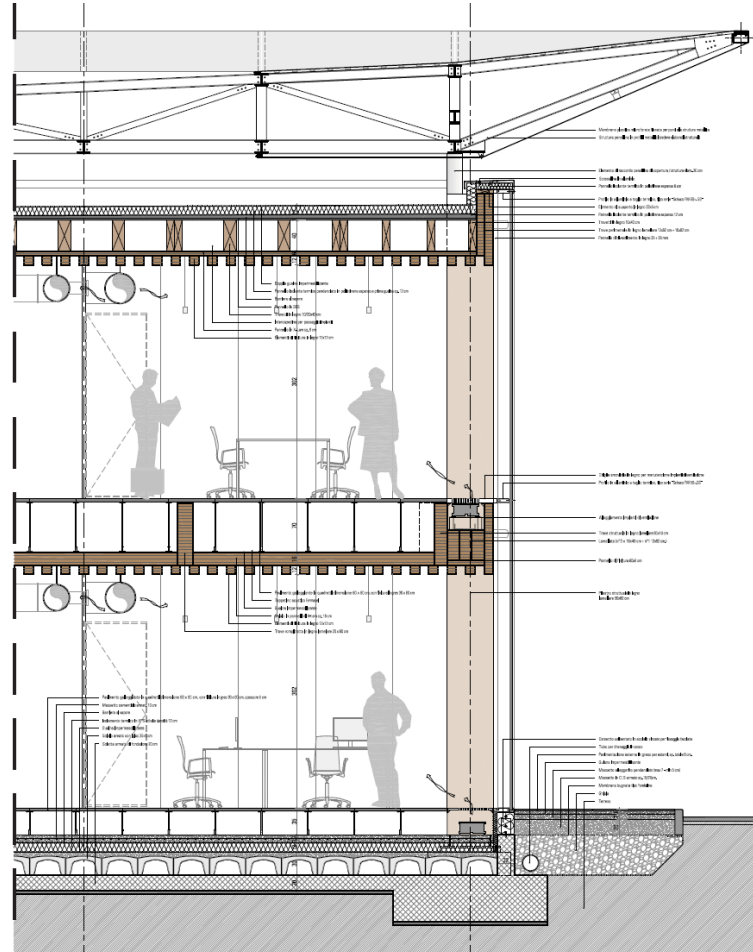


# Iperceramica Headquarter – FASI DI CANTIERE





# Iperceramica Headquarter – RIVESTIMENTO FACCIATA



Il tamponamento esterno completamente vetrato è realizzato con un sistema di facciata semistrutturale del tipo

**Schuco FW50+ SG**

composta da profili tipo Schuco in alluminio con montanti e traversi di profondità ca. 200 mm

Trasmittanza Termica  
 Vetro+Infisso  $U_{cw} < 0$   
 uguale a **1,2**  
**W/(mqk).**

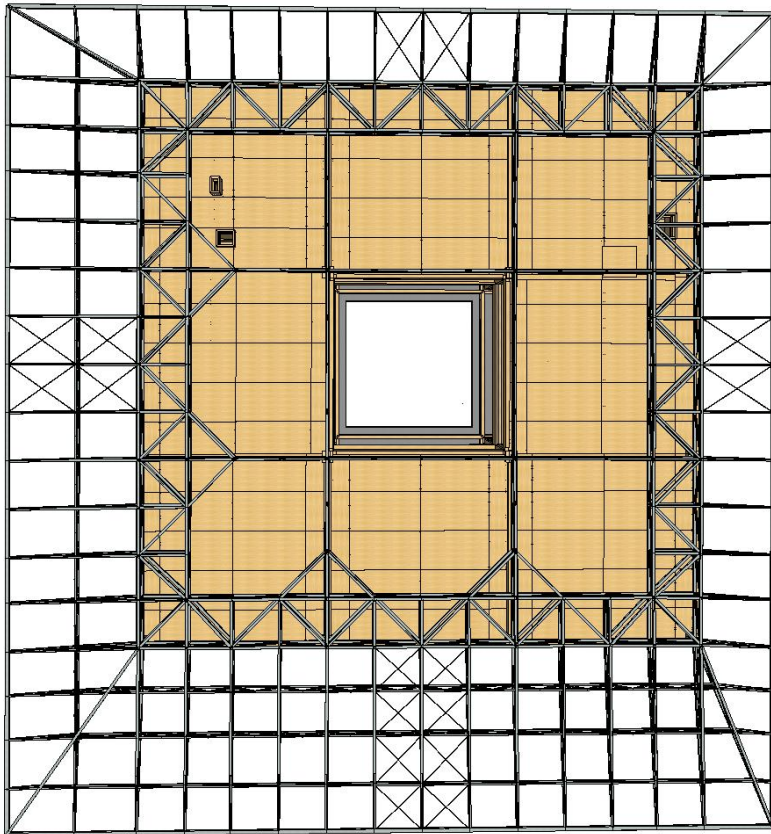
# Iperceramica Headquarter – FASI DI CANTIERE



# Iperceramica Headquarter – FASI DI CANTIERE



## Iperceramica Headquarter – PENSILINA



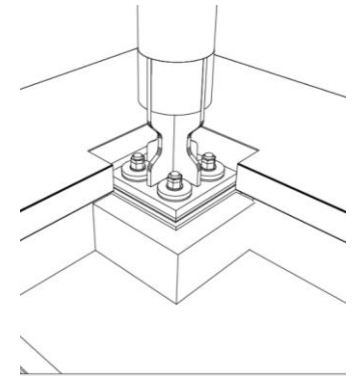
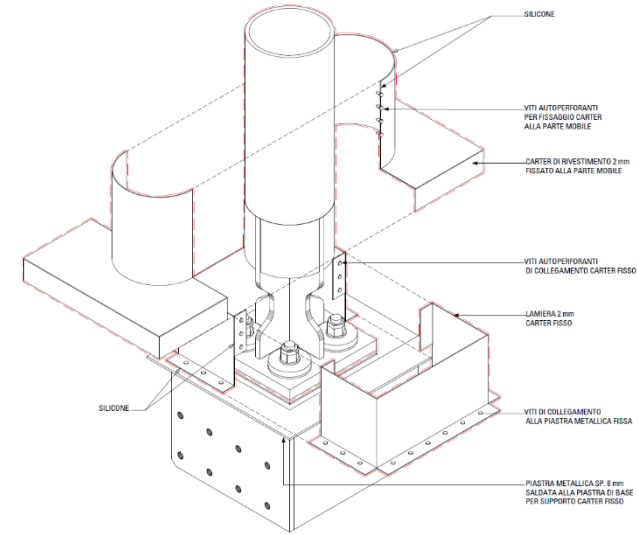
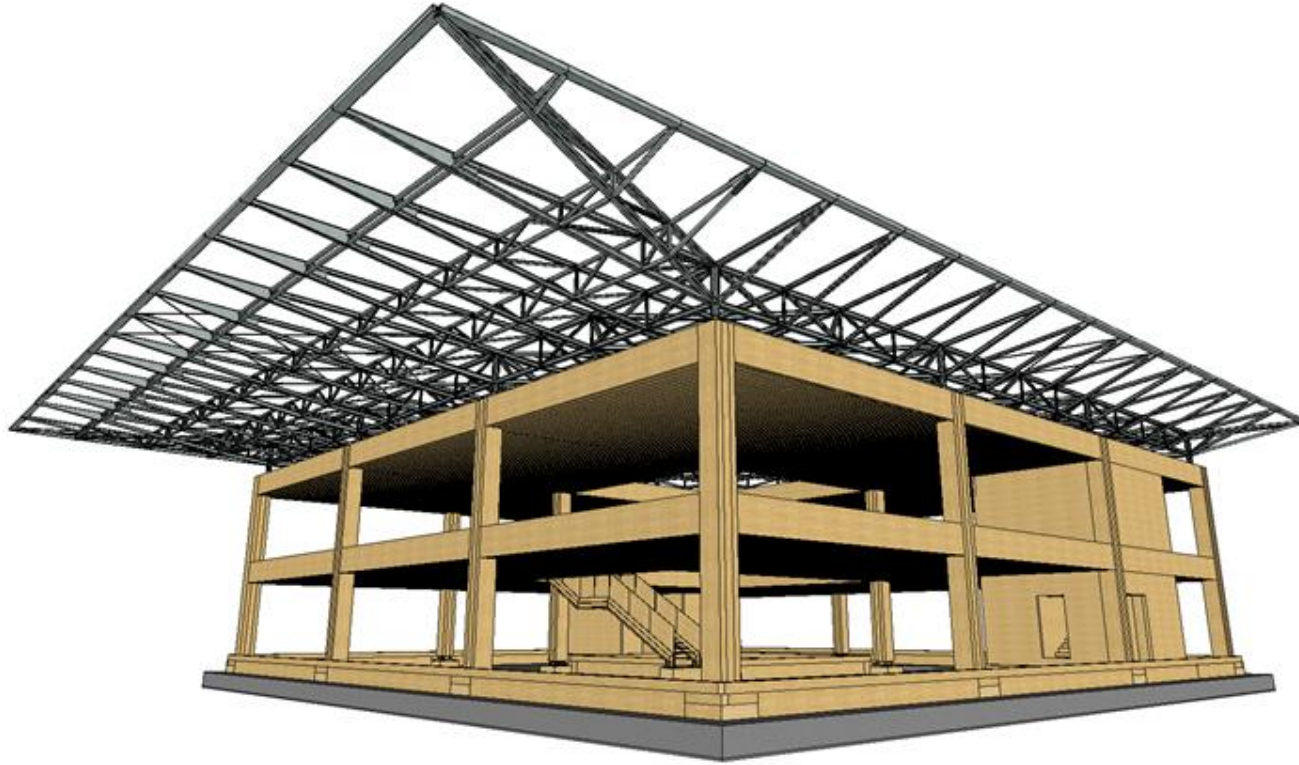
Struttura leggera  
realizzata mediante profili  
in acciaio HEA 180 e 120.  
Travi reticolari a passo  
250cm a formare gli  
aggetti ombreggianti

Rivestimento con tessuto  
microforato del tipo Soltis FT  
371, della azienda Serge-Ferrari  
e ad alta riflessione ( $R > 0.8$ )

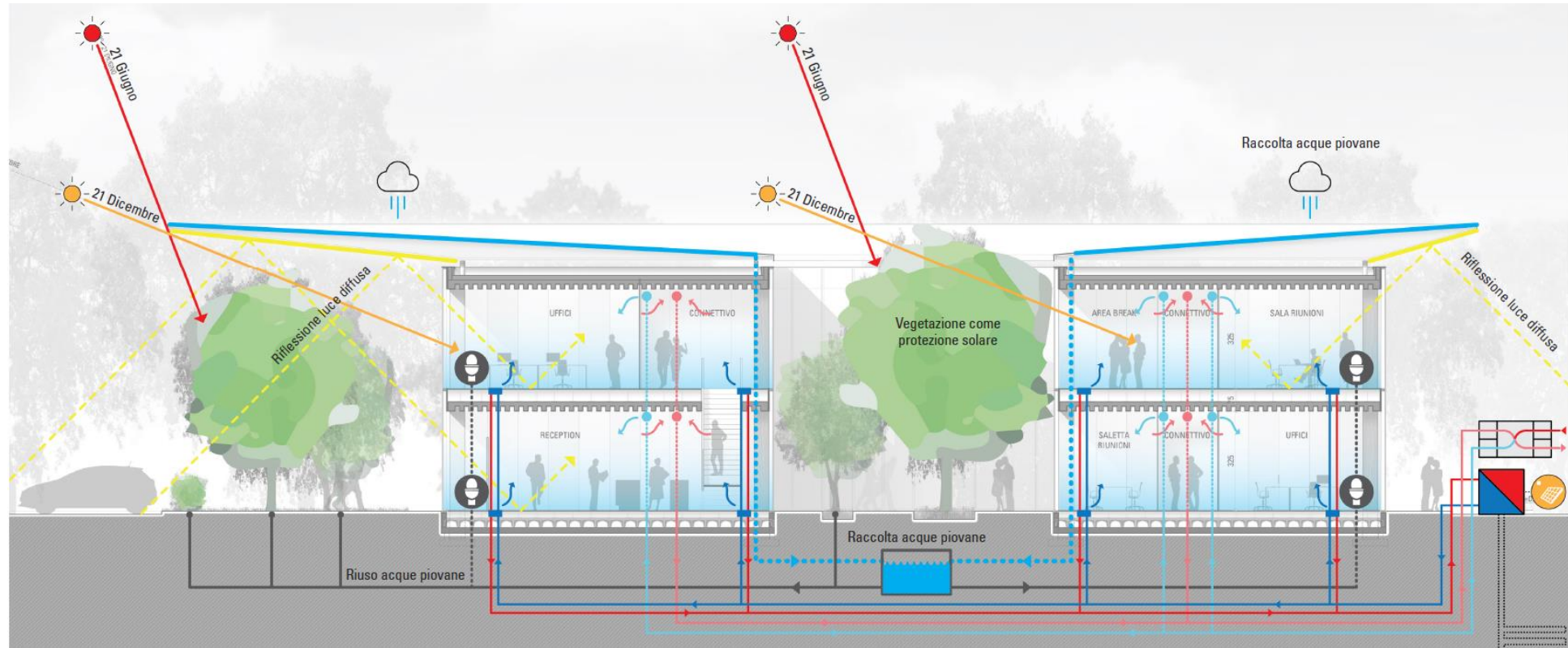


*sporto di 9 mt. sul fronte sud,  
6 mt sul fronte ovest,  
2,5 mt sui fronti est e nord*

# Iperceramica Headquarter – PENSILINA



# Iperceramica Headquarter – PENSILINA



# Iperceramica Headquarter



©Giovanni De Sandre

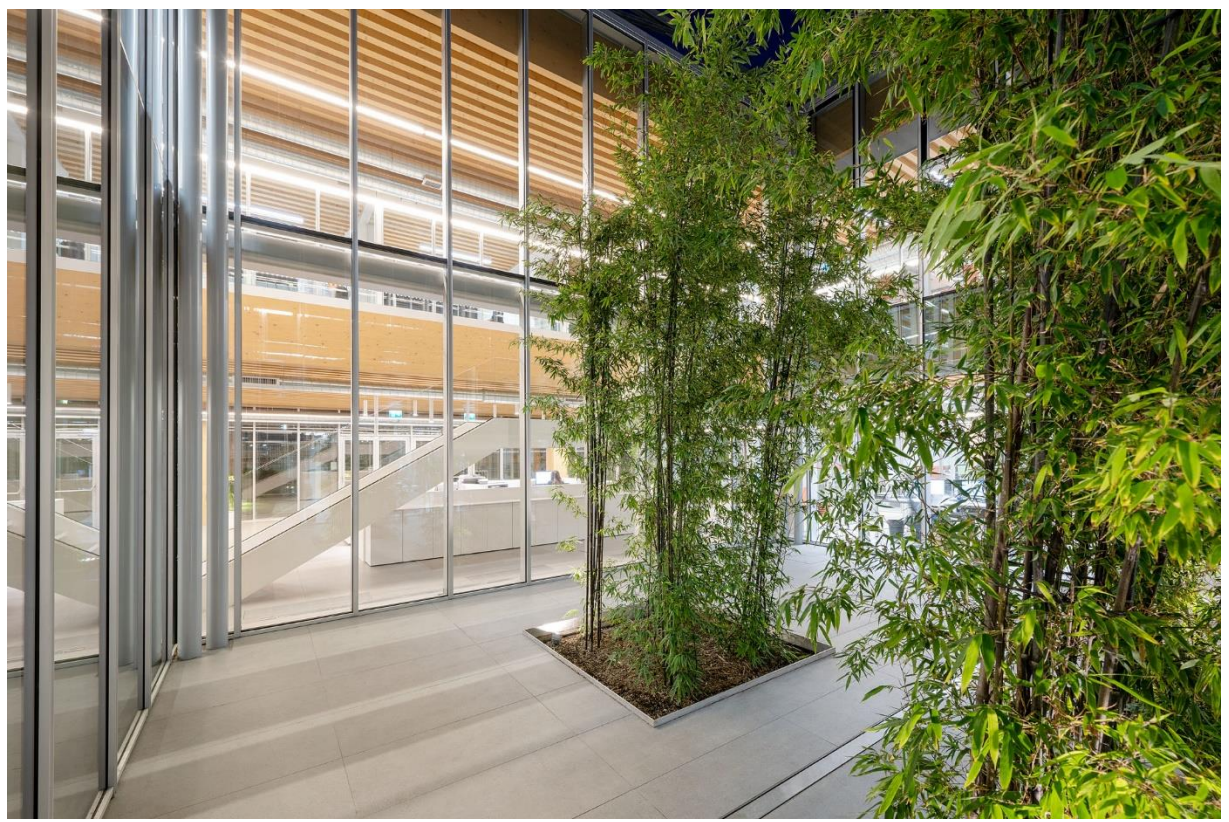
# Iperceramica Headquarter



©Giovanni De Sandre

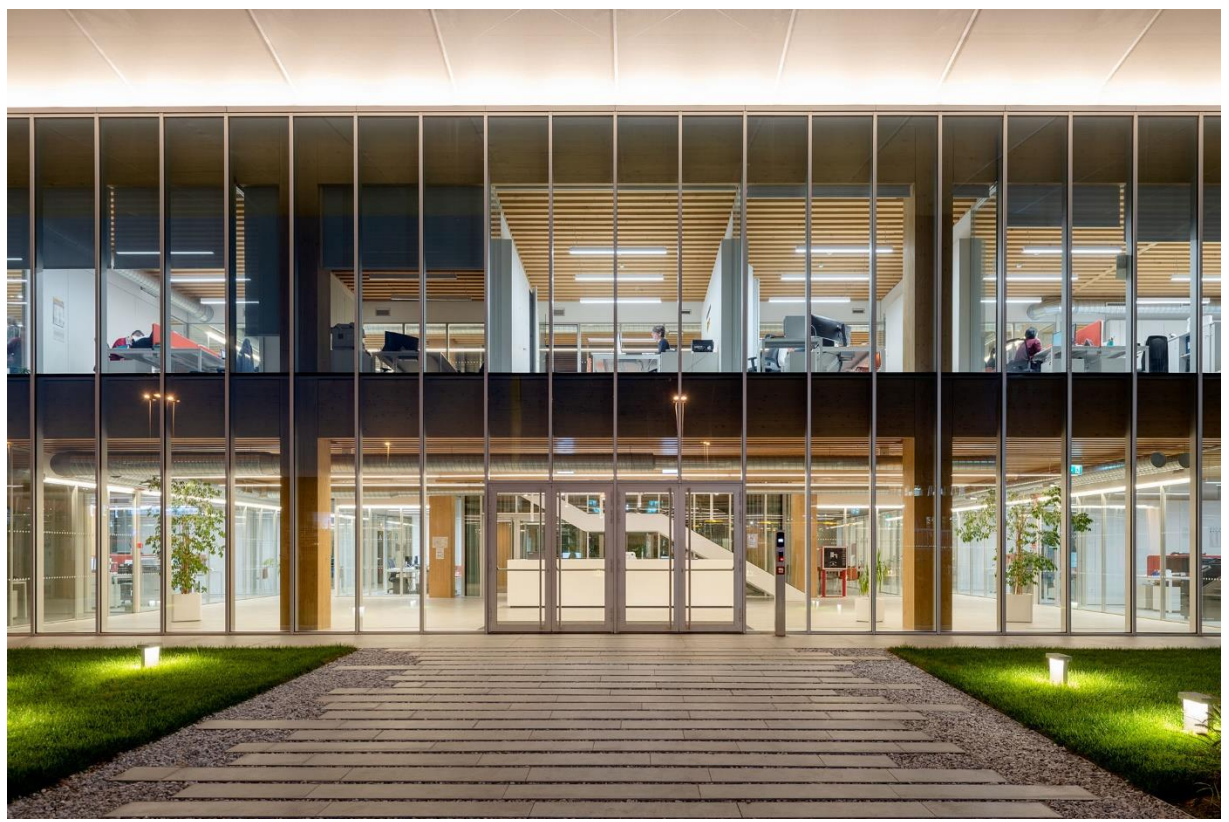


# Iperceramica Headquarter



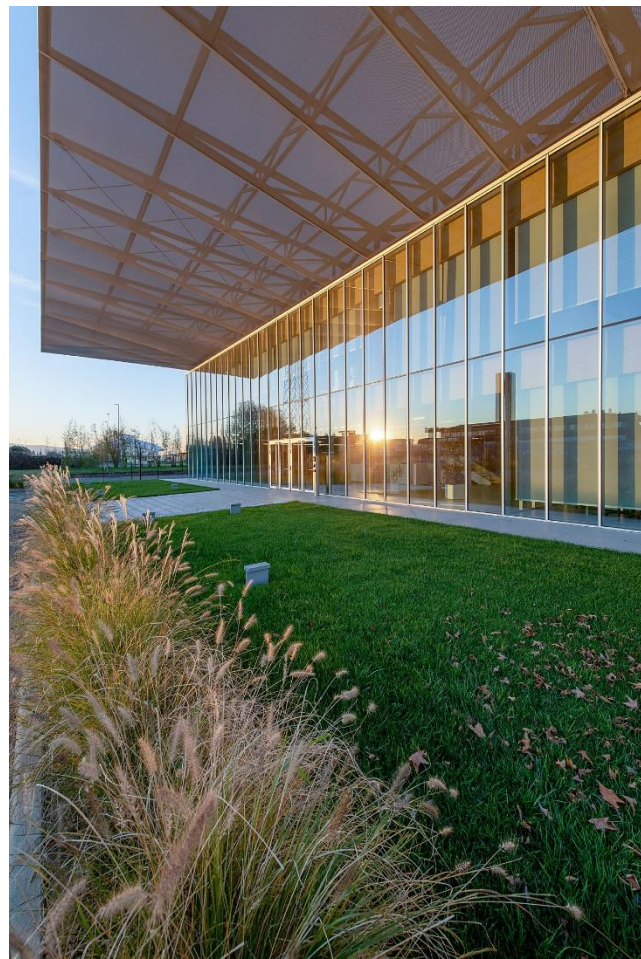
©Giovanni De Sandre

# Iperceramica Headquarter



©Giovanni De Sandre

# Iperceramica Headquarter



©Giovanni De Sandre

# Iperceramica Headquarter



©Giovanni De Sandre

Organizzato da:



In collaborazione con:



Promosso da:



Partner tecnico:



Con il patrocinio di:



Con il supporto di:



Media partner:



Partner tecnico finanziario:



Premium partner:

